

2019/20



New at the mdw?

Dear Students,

I extend a warm welcome to you on behalf of the entire Rectorate team, and I'm very happy that you're studying at the mdw – University of Music and Performing Arts Vienna.

Beginning a new programme of study always entails a few difficulties and complications. For many students, these will include finding a place to live, trips to public offices, learning a new language, settling into a new city and/or local culture, and similar things.

The mdw would like to help you begin your studies with as few complications as possible. To help us do so, please **actively use your mdw E-mail account** – because E-mails from the mdw will be sent exclusively to your name@students.mdw.ac.at address. Your university address enables you to receive information from our service departments and teaching staff quickly and securely.

You can confidently entrust any questions you may have to representatives of the hmdw (our student union) as well as the department offices and/or dean's offices.

I wish you a great start and successful studies, and I hope you'll soon be feeling right at home here at the mdw!

Cordially yours,
Barbara Gisler-Haase,
Vice Rector for Academic Affairs
and Young Artists' Promotion

Congratulations on being admitted! Here's what you need to do now...

- § For foreign students:
Get informed on visas and entry requirements (oead.at/de/nach-oesterreich/einreise-und-aufenthalt)
- § Download/print your curriculum (mdw.ac.at/72)
- § Document your German skills (pages 4 & 14, mdw.ac.at/398)
- § Take care of initial registration (enrolment) (page 4)
- § Pay any fees that are due (page 4, mdw.ac.at/216)
- § Activate your mdwOnline account with your PIN code (page 5)
- § Activate your mdwCard (page 5)
- § Register for courses via mdwOnline (Please pay attention to deadlines!)

Personal notes:

How do I register for my first semester at the mdw?

1

Registration advising

Information table in the entrance hall (Aula)



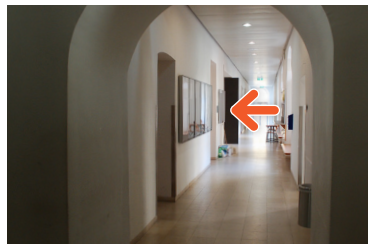
The Student Union (hmdw) will help you fill out the “Semestermeldung” [Semester Enrolment] form.

General registration period:
Mon., 9 Sept. – Fri., 4 Oct. 2019

2

Initial registration (enrolment)

Studies & Academic Services (STAB)
Room BEG01



Take a waiting number ticket for your initial registration. You'll need to bring along the following documents:

- A copy of your passport or personal ID (driving licenses are not accepted!)
- Your filled-out “**Semestermeldung**” form
- If you'll be studying music education, music therapy, drama directing, or musical theatre direction: your original Matura or Abitur [Austrian or German school leaving exam] certificate
- If registering for a postgraduate programme: your original bachelor's or master's degree certificate

If German is not your mother tongue, and you've done your German test

- at the mdw, your test administrator will inform the STAB as to whether you've passed.
- **outside the mdw**, you'll need either a **Matura certificate** from a German-language Gymnasium or a B1, B2, or C1-level **German language diploma** (Goethe Certificate or ÖSD Certificate).

At the STAB, you'll receive **bank transfer information** for payment of your ÖH and/or tuition fee, a **PIN** for mdwOnline, and your mdwCard.

3

Following your visit to the STAB

Transfer your ÖH membership fee and tuition. Please be sure to fill out the payment reference field if using online banking. Your payment should reach the STAB within 2 to 3 business days.

Once your payment has been received, you can:

- **Use your PIN to activate your mdwOnline account** (instructions on p. 5)
- Use mdwOnline to print out your student record sheet (Studienblatt) and confirmation of enrolment. Please check both of these documents immediately and report any errors to the STAB!

- **Activate your mdwCard:** in the corridor next to Room BEG01, you'll find a printer with a sign that reads "Activate your mdwCard". You'll also find such printers at our Rennweg, Penzing, and Seilerstätte locations.



Your mdwCard is now valid (until the expiration date indicated on the card).

If enrolling for a programme that charges tuition: send the STAB your confirmation of payment as discussed when you enrolled.

How do I activate my mdwOnline account and my university E-mail address?

Back when you registered for your entrance exam, you created an **applicant account** in mdwOnline. You no longer need this account once you've enrolled. You'll now be given a student account with a wider range of functions (e.g., registration for courses and exams; printing out grade reports, enrolment confirmation documents, etc.). Your **PIN** lets you activate this new account as follows:

1. You've already enrolled, and you've paid your ÖH fee (and tuition, if applicable) at least 2-to-3 days ago.
2. Go to online.mdw.ac.at

3. Click on the yellow key.



4. Find the bullet point "Studierende" and click on the link that reads "Geben Sie hier Ihren PIN-Code ein."

Benutzername
Kennwort
Anmeldung Abbrechen
Kennwort vergessen?

Erstanmeldung Wenn Sie noch keinen Account (Benutzername + Kennwort) besitzen, müssen Sie diesen mit Hilfe eines PIN-Codes einrichten. Wenn Sie Ihr Kennwort vergessen haben, benötigen Sie ebenfalls einen (neuen) PIN-Code

- **Studierende:** Sie erhalten Ihren PIN-Code in der Studien- und Prüfungsabteilung. [Geben Sie hier Ihren PIN-Code ein.](#)
- **Bediensatte:** [Geben Sie hier Ihren PIN-Code ein.](#)

5. Fill out the following three fields from top to bottom, entering your PIN, matriculation number, and date of birth (DDMMYYYY). Click the "Speichern" (Save) button when you're done.

PINcode
Sie erhalten Ihren PIN-Code in der Studien- und Prüfungsabteilung.
Matrikelnummer
Geburtsdatum
Format: TTMMJJJJ
Speichern Abbrechen

6. You'll now see your mdwOnline user name (**please make separate note of this**) above the two fields in the "Account" frame. Next, choose and confirm an individual password for mdwOnline and another password for your E-mail account. Check the box below to accept the terms of use and click once again on "Speichern".

Account
Benutzername (nachname-vorname)
Kennwort
Kennwort bestätigen
Wählen Sie ein beliebiges Kennwort (Min. 10, max. 20 Zeichen. Die Groß- bzw. Kleinschreibung ist relevant. Dieses Kennwort gilt für mdwOnline und Ihren E-Mail-Konto.)
E-Mail
Kennwort
Kennwort bestätigen
Als "beliebiges Kennwort" ein mdwOnline-Account einrichten. Bitte wählen Sie ein Kennwort mit 10 bis 20 Zeichen. Die Groß- bzw. Kleinschreibung ist relevant. Sonderzeichen sind nicht erlaubt.
Ich akzeptiere die Nutzungsbedingungen
Benutzername: Kennwort:
Die Benutzernamen dürfen nur Buchstaben und Zahlen enthalten.
Speichern Abbrechen

7. You've now set up your mdwOnline account including your @students.mdw.ac.at mailbox and your personal data storage space on the mdw's file server (for further information on IT services, see mdw.ac.at/zid/services).

What do I do if I've forgotten my mdwOnline password?

Grab your mdwCard and pay a visit to the STAB. They'll give you a new pin code. Or just send an E-mail to studienabteilung@mdw.ac.at with a photo/scan of your photo ID or your mdwCard. Information on changing your password: mdw.ac.at/zid/aktivierung

Important:

- **All mail from the mdw will be sent to your university E-mail address. Therefore, please check your mdw mailbox regularly.**
- If your residential address or telephone number changes: log into mdwOnline, click on "Studien- und Heimatadresse" [Address during the semester and home address], and edit your information here.

Questions on IT services?

Do you need more information on mdwOnline, Wi-Fi, printing...?

Terms of Use for mdw IT services

mdw.ac.at/zid/benutzungsordnungen

IT Services (Wi-Fi, VPNs, etc.)

mdw.ac.at/zid/services

mdwCard: This is your student ID, university library card, and cafeteria discount card.

mdw.ac.at/zid/mdwcard

mdwPrint: printing, copying, and scanning service for students.

All of these services are used via your mdw online account and pre-paid with money added to your mdwCard. mdw.ac.at/zid/mdwprint

mdwBox: access to your files on the file server; file sharing.
mdw.ac.at/zid/mdwbox

Handbook for student users of

mdwOnline: after logging into your mdwOnline account, click on "Handbücher" and look for the linked PDF file "Handbuch für Studierende".

Service Centre of the Information Technology Department (ZID)

Anton-von-Webern-Platz 1, 1030 Vienna
Building Section D, Room DEG27
T +43 1 711 55-7373
helpdesk@mdw.ac.at

Opening Hours:

Mon.–Fri.: 9:00–11:30 a.m. and
12:30–4:00 p.m.

Questions on studies in general?

Orientation and general Information



Info-Point

Anton-von-Webern-Platz 1
1030 Vienna
Building A, entrance hall (Aula)
info-point@mdw.ac.at

For applicants, students, and visitors who seek information on the mdw of any kind, the Info-Point is an ideal first stop. And whenever you're unsure to whom you should be turning on a specific matter, you can always ask at the Info-Point – they'll help point you in the right direction!

Central Info-Point responsibilities:

- Advising on all kinds of studies-related questions and/or problems; helping find sources of further assistance
- Personal advising sessions with applicants
- Providing help with filling out forms (e.g. for having prior coursework credited)
- Information on events and course offerings at the mdw
- Sale of discounted tickets, mdw merchandising products, and the Student Guide & Course Catalogue

Opening Hours:

prior to the registration deadline

Mon. & Thurs.: 9 a.m. – 12 noon
and 2–5 p.m.

Tues.: 9 a.m. – 3 p.m.

Wed.: 10 a.m. – 1 p.m. and 3:30–6:30 p.m.

Fri.: 9 a.m. – 1 p.m.

during the academic year

Mon. & Thurs.: 2–5 p.m.

Tues. & Fri.: 10 a.m. – 1 p.m.

Wed.: 10 a.m. – 1 p.m. and 3:30–6:30 p.m.

Admission, deadlines, administration

Studies & Academic Services (STAB)

Anton-von-Webern-Platz 1, 1030 Vienna

Building Section A, Room BEG01

T +43 1 711 55-6900

studienabteilung@mdw.ac.at

mdw.ac.at/stab

Opening Hours:

Mon. Thurs., Fri.: 9 a.m. – 12 noon

Tues.: 9 a.m. – 12 noon, 1–3 p.m.

Specific questions on education-related programmes

Office for Music Education-Related Study Programmes (STAB am Rennweg)

Rennweg 8, 1030 Vienna

2nd courtyard, 1st floor, Room A0136

T +43 1 711 55-6910

mdw.ac.at/stdmp

Opening Hours:

Mon. Thurs., Fri.: 9 a.m. – 12 noon

Tues.: 9 a.m. – 12 noon, 1–3 p.m.

Advising by students, for students



hmdw – Student Union of the mdw

Anton-von-Webern-Platz 1, 1030 Vienna

Building Section L, Room LEG01



Office manager

Martin Furch

T +43 1 711 55-8901

hmdw@mdw.ac.at

hmdw.ac.at



hmdw Chairs

From left to right: Naomi E. Luther
(2nd Deputy Chair), Wolfgang Nagl (Chair),
Anna Warzinek (1st Deputy Chair)

hmdw-vorsitz@mdw.ac.at

The hmdw represents the interests of all mdw students and answers questions pertaining to student life and studies.

hmdw opening hours:

Mon.–Thurs.: 9 a.m. – 3 p.m.

Fri.: 9 a.m. – 12 noon

Important hmdw points of contact:

- Studies department: answers all questions on studies
- Foreign students department: answers questions on visas and residence permits
- Social affairs department: informs you about scholarships, financial topics, forms of assistance and support
- Department of equality and feminist/queer policy: provides confidential help with questions on harassment, sexual assault, discrimination, and mobbing

The hmdw also serves mdw's individual branches of study through its **student representatives**, whose contact information you can find at hmdw.ac.at/

Major-specific advising & administration

Office of the Dean of Instrumental Studies (SDI)

Responsible for instrumental studies (string and wind instruments, guitar, harp, percussion instruments, and the keyboard instrument majors piano, piano vocal accompaniment, organ, harpsichord) as well as church music, chamber music, contemporary music, and early music (historical performance performance).

Anton-von-Webern-Platz 1, 1030 Vienna
Building Section L, 1st floor, Room L0111
mdw.ac.at/stdi

Opening Hours:

prior to the registration deadline

Mon., Thurs., Fri.: 9 a.m. – 12 noon

Tues.: 10 a.m. – 12 noon, 1–3 p.m.

during the academic year

Mon., Thurs., Fri.: 10 a.m. – 12 noon

Important: At the beginning of the first semester, students in BA programmes for harpsichord, organ, piano, piano chamber music, and piano vocal accompaniment as well as students in BA, MA, and diploma programmes for all other instruments, must appear in person at the Office of the Dean of Instrumental Studies to enrol in their compulsory courses.

Team:

Patricia Braun

- Student advising
- Central registration of new students for compulsory courses, advising of first-semester students
- Registration for orchestra-related courses and projects
- Room administration

Birgit Buxbaum

- Student advising
- Administrative contact for the Enrichment Programme for the Exceptionally Gifted
- Organisation of minor subjects and ad hoc examinations for the preparatory programme
- Processing of Erasmus programme applications

Julia Hahn

- Student advising
- Central registration of returning students for compulsory courses
- Information on course offerings; academic resource management

Curricula: mdw.ac.at/72

Office of the Dean of Music Education Programmes / Koordinationszentrum Lehramt Musik

Rennweg 8, 1030 Vienna

2nd courtyard, 1st floor, Room A0124

T +43 1 711 55-2030

mdw.ac.at/stdmp

The mdw's Office of the Dean of Music Education Programmes is responsible for organising and coordinating music education-related degree programmes and supplemental programmes as well as

cooperative arrangements pertaining to music education programmes.

Education-related programmes of study:

- Instrumental and Voice Education (IGP)
- Music Education (ME)
- Instrumental Music Education (IME)
- Music Education – Lateral Entry
- Music and Movement Education (MBP)
- Music Therapy (MTH)

Supplemental programmes:

- Elementary Music-Making
- Elementary Music Education
- Voice Education (preparatory)

Cooperation with the Joseph Haydn

Conservatory in Eisenstadt: this arrangement makes it possible to earn one's BA and then be admitted to the MA programme in Instrumental (& Voice) Education.

The **Koordinationszentrum Lehramt Musik** is the central point of contact for all matters having to do with teacher training and certification that need to be developed further in an operatively and substantively coordinated manner via cooperation between the mdw and other involved educational institutions (particularly teachers' colleges).

Team:

Elke Nagl

Dean of Music Education Programmes
and head of the Koordinationszentrum
T +43 1 711 55-2030
nagl-e@mdw.ac.at

Otto Grubauer

Associate Dean of Music Education
Programmes
T +43 1 711 55-2032
grubauer@mdw.ac.at

Wilfried Aigner

Deputy head of the Koordinationszentrum
T +43 1 711 55-3717
aigner-w@mdw.ac.at

Sabine Dostal

T +43 1 711 55-2031
dostal@mdw.ac.at

Daniela Sölkner

T +43 1 711 55-2033
soelkner@mdw.ac.at

Isabell Wodnar

T +43 1 711 55-2035
wodnar@mdw.ac.at

**Office of the Dean of
Research Programmes**

Anton-von-Webern-Platz 1, 1030 Vienna
mdw.ac.at/stdw

Sandra Smekal

T +43 1 711 55-2042
smekal@mdw.ac.at
Building Section D, Room D0245

Karin Zacsek

T +43 1 711 55-2041
zacsek@mdw.ac.at
Building Section D, Room D0245

Studies-related legal matters & exam recognition

Office of the Director of Studies

Anton-von-Webern-Platz 1, 1030 Vienna
Building Section F, 1st floor, Room F0106
studiendirektorin@mdw.ac.at
mdw.ac.at/stdir

Opening Hours:

Mon., Tues., Thurs.: 10 a.m. – 12 noon

Central responsibilities are:

- Issuance of admission examination requirements in cases where admission examinations are required
- Determination of alternative (entrance) exam methods in cases of disability
- Approval of individual study programmes
- Recognition of examinations
- Approval of abbreviated periods of study for artistic majors
- Approval of student leave
- Annulment of improperly administered examinations and their results
- Advising on specific legal questions relating to one's studies

mdw Campus

1 Studies & Academic Services (STAB)

Building Section A
Room BEG01

2 hmdw – Student Union of the mdw

Building Section L
Room LEG01

3 Director of Studies

Building Section F
1st floor, Room F0106

4 Dean of Instrumental Studies (SDI)

Building Section L
1st floor, Room L0111

5 Dean of Research Programmes

Building Section D
2nd floor, Room D0245

6 Library ub.mdw

Building Section R/S

7 Centre for Further Education (ZfW)

Building Section T
2nd floor, Rooms
T0204 & T0206

8 Career Center

Building Section T
2nd floor, Room T0205

9 Service Centre of the IT Department (ZID)

Building Section D
Room DEG27

10 Working Group on Equal Opportunities (AKG)

Building Section L
1st floor, Room L0127

11 Orchestra Office

Building Section B
1st floor, Room B0159

i Info-Point

Building Section A
entrance hall (Aula)





Departments

1. Department of Composition, Electro-acoustics, and Tonmeister Education

Anton-von-Webern-Platz 1, 1030 Vienna

T +43 1 711 55-2101

mdw.ac.at/ike

2. Department of Conducting

Anton-von-Webern-Platz 1, 1030 Vienna

T +43 1 711 55-3201

mdw.ac.at/musikleitung

3. Department of Musicology and Performance Studies (IMI)

Centre for Research on Arnold Schönberg and the Viennese School

Seilerstätte 26, 1010 Vienna

T +43 1 711 55-3501

mdw.ac.at/imi

4. Department of Piano

Lothringerstraße 18, 1030 Vienna

T +43 1 711 55-2201

mdw.ac.at/inst4

5. Fritz Kreisler Department of String Instruments, Harp, and Guitar

Anton-von-Webern-Platz 1, 1030 Vienna

T +43 1 711 55-2301

mdw.ac.at/str

6. Leonard Bernstein Department of Wind and Percussion Instruments

Anton-von-Webern-Platz 1, 1030 Vienna

T +43 1 711 55-2401

mdw.ac.at/lbi

7. Joseph Haydn Department of Chamber Music, Early Music and Contemporary Music

- *Chamber Music*

- *Early Music*

- *Contemporary Music*

Ungargasse 14, 1030 Vienna

T +43 1 711 55-3001

mdw.ac.at/ijh

8. Department of Organ, Organ Research and Church Music

Seilerstätte 26, 1010 Vienna

T +43 1 711 55-2601

mdw.ac.at/iof

9. Department of Vocal Studies and Music Theatre

Penzinger Straße 7, 1140 Vienna

T +43 1 711 55-2701

mdw.ac.at/inst9

10. Department of Drama – Max Reinhardt Seminar

Penzinger Straße 9, 1140 Vienna

T +43 1 711 55-2801

maxreinhardtseminar.at

11. Department of Film and Television – Film Academy Vienna

Metternichgasse 12, 1030 Vienna

T +43 1 711 55-2901

filmakademie.wien

12. Department of Music Education Research, Music Didactics and Elementary Music Education (IMP)

Metternichgasse 8, 1030 Vienna

T +43 1 711 55-3701

musiceducation.at

13. Department of Music and Movement Education/Rhythmics and Music Physiology

- *Music and Movement Education / Rhythmics*

- *Music Physiology*

Singerstraße 26a, 1010 Vienna

T +43 1 711 55-3901

mdw.ac.at/mbm

14. Department of Music Therapy

Rennweg 8, 1030 Vienna

T +43 1 711 55-2531

mdw.ac.at/mth

15. Department of Popular Music (ipop)

Anton-von-Webern-Platz 1, 1030 Vienna

T +43 1 711 55-3001

mdw.ac.at/ipop

16. Ludwig van Beethoven Department of Piano and Harpsichord in Music Education

Rennweg 8, 1030 Vienna
T +43 1 711 55-4401
mdw.ac.at/lvb

17. Joseph Hellmesberger Department of String Instruments, Guitar and Harp in Music Education

Rennweg 8, 1030 Vienna
T +43 1 711 55-4501
mdw.ac.at/hbi

18. Franz Schubert Department of Wind and Percussion Instruments in Music Education

Rennweg 8, 1030 Vienna
T +43 1 711 55-4601
mdw.ac.at/fsi

19. Antonio Salieri Department of Vocal Studies and Vocal Research in Music Education

Rennweg 8, 1030 Vienna
T +43 1 711 55-4701
mdw.ac.at/instas

20. Anton Bruckner Department of Choir and Ensemble Directing and Music Theory in Music Education

Anton-von-Webern-Platz 1, 1030 Vienna
T +43 1 711 55-4801
mdw.ac.at/abi

21. Department of Folk Music Research and Ethnomusicology

Anton-von-Webern-Platz 1, 1030 Vienna
T +43 1 711 55-4201
mdw.ac.at/ive

22. Department of Music Acoustics – Wiener Klangstil (IWK)

Anton-von-Webern-Platz 1, 1030 Vienna
T +43 1 711 55-4301
iwk.mdw.ac.at

23. Department of Music Sociology

Anton-von-Webern-Platz 1, 1030 Vienna
T +43 1 711 55-3601
musiksoziologie.at

24. Department of Cultural Management and Gender Studies (IKM)

Anton-von-Webern-Platz 1, 1030 Vienna
T +43 1 711 55-3401
mdw.ac.at/ikm

University Library **ub.mdw**

Anton-von-Webern-Platz 1, 1030 Vienna
Building Sections R & S
bibliothek.mdw.ac.at

Opening Hours:

Mon.–Thurs.: 9 a.m. – 7 p.m.

Fri.: 9 a.m. – 4 p.m.

Please see the library's web presence for opening hours when the University is not in session.

The ub.mdw is home to holdings of around 250,000 media items (printed music, books, periodicals, AV media, digital services, etc.). Most items can be borrowed. Your **mdw-Card** is **simultaneously your library card**. All you need to do is **activate it at the library office** on your first visit!

Infrastructure:

- Ca. 70 individual reading/study places in the Reading Room and open stacks areas
- 2 rooms with presentation technology for group work
- Large-format scanner
- 2 photocopiers
- Wi-Fi
- Laptop lending
- Lounge zone with daily and weekly newspapers in the reading room

Services:

- **BiblioFit – introductory schooling for first-time users:**
Tues., 22 Oct. / 5 Nov. / 3 Dec.: 5–6 p.m.
Wed., 23 Oct. / 6 Nov. / 4 Dec.: 2–3 p.m.
Meeting place in the library entrance area, register at infobib@mdw.ac.at

- **Individual advising on research and writing:** Appointments at infobib@mdw.ac.at
- **Walk-in advising on writing** (without appointment): every Thursday, 1–3 p.m., Group Room 1

Networks & Further Education



mdw club – for alumni, friends and partners

mdw.ac.at/mdwclub

The mdw club is a cultural and international network for mdw graduates, students, teachers, friends, and partners, as well as for non-teaching mdw employees.

Services:

- **Discounts & other advantages** at the Vienna Konzerthaus, Volkstheater, Neue Oper Wien, Musikhaus Doblinger, Musikhaus Kerschbaum, Musikhaus Votruba, and many more places
- **Network & events**
- **Regular electronic newsletter with event tips and contests with prizes**
- **Career & further education:** workshops on topics including taxes and social insurance, self-marketing, management, and booking at especially reasonable prices in collaboration with the Centre for Further Education and mica – music austria



Zentrum für
Weiterbildung

Centre for Further Education (ZfW)

Anton-von-Webern-Platz 1, 1030 Vienna
Building Section T, Rooms T0204 & T0206
personalentwicklung@mdw.ac.at
mdw.ac.at/zfw

Many of the ZfW's offerings are also open to mdw students. A brochure that includes its current course schedule is published once annually in mid-September. The ZfW course schedule as well as all of its other services can also be viewed at mdw.ac.at/zfw. Registration for further education courses likewise takes place online. mdw club members receive a 25% discount on course fees.

Course themes include self-management, mental training, languages, computing-related topics, physical fitness, and professional orientation as well as career development.

Lehrgang Sprachkompetenz Deutsch/ Courses for German Language Competence

Anton-von-Webern-Platz 1, 1030 Vienna
Rita Krebs, krebs@mdw.ac.at
mdw.ac.at/1039

Winter semester:

Course 1: **A1.1** / Course 2: **B1.2**

Summer semester:

Course 1: **B1.1** / Course 2: **B2.2**

- 6 classes per week for one academic year
- € 350 per semester
- Mandatory placement exam at the beginning of each semester
- For placement exam dates, class times, and class locations, please see the information sheet at mdw.ac.at/1039
- General language instruction at several levels, music-related texts and exercises

- If sufficient skills are already present, it is possible to attend only the summer semester.
- Summer semester grade reports are accepted as documentation of German skills for instrumental studies and other music-related programmes.

GLEICHSTELLUNG

GENDER STUDIES

DIVERSITÄT

mdw – Universität für Musik und darstellende Kunst Wien

Administrative Department for Equality, Gender Studies & Diversity (GGD)

Anton-von-Webern-Platz 1, 1030 Vienna
Building Section B
Rooms B0247, B0249 & B0259
mdw.ac.at/gender

Office: T +43 1 711 55-6071
ggd@mdw.ac.at

Andrea Ellmeier (head), Birgit Huebener (project management), Julia Kurinjumala (office), Ulli Mayer (diversity management)

The Administrative Department for Equality, Gender Studies & Diversity (GGD) was established in accordance with the Austrian Universities Act (UG) of 2002. A mutual goal of the GGD and the university's top administrators is to promote teaching and research at the mdw that is fair, sensitive to diversity, and characterised by gender equality. We therefore view it as our mission to convey, network, and anchor artistic and research-related knowledge pertaining to gender and diversity in music*theatre*film.

- Numerous projects and initiatives: mdw Gender Screening, Holz-Blech-Schlag [Woodwinds-Brass-Percussion], mdw_Gender[Queer]Diversity Call.
- mdw Diversity Strategy
- The brochure "Gender Studies bzw. diversitätssensible Lehrveranstaltungen" [Gender Studies and Diversity-Sensitive Courses] is published at the beginning of each semester.
- The set of guidelines entitled "Fair in Wort und Bild" [Fair in Words and Images] supports gender equality in text authorship.



Working Group on Equal Opportunities (AKG)

Anton-von-Webern-Platz 1, 1030 Vienna
Building Section L, Room L0127
T +43 1 711 55-8230
akg@mdw.ac.at, mdw.ac.at/akg

Please direct inquiries to:

Angelika Silberbauer (chair)
+43 664 841 43 17
silberbauer@mdw.ac.at

The Working Group on Equal Opportunities offers students, teaching staff, and administrative employees information, confidential advising, and support in cases of **discrimination** and of **sexual and gender-related harassment**. Discrimination is defined as poorer treatment of an individual due to gender, ethnicity, religion, worldview, age, sexual orientation, and/or disability.

In everyday university life, this can manifest itself in forms such as unequal treatment based on gender, derogatory and/or racist language, sexist "jokes", undesired invitations, gifts, etc., or ridicule of religious practices.

The AKG:

- provides help in cases of assault, abuse of power, threats, insults, racism, sexism, harassment, mobbing, and bullying in teaching situations.
- has the right to be present at admission exams and final exams (including non-public meetings).
- supports the development and expansion of Gender and Diversity Studies.
- promotes the use of gender-appropriate language.
- provides support and advice in cases of problems reconciling study- and care-giving-related obligations.
- acts swiftly and discreetly. Furthermore, its members are obligated to maintain strict confidentiality.



Career Center

mdw Career Center

Anton-von-Webern-Platz 1, 1030 Vienna
Building Section T, Room T0205
T +43 1 711 55-7820 or -7821
careercenter@mdw.ac.at
mdw.ac.at/ccenter

The mdw's Career Center provides support to students and young graduates on their way into professional life for up to 5 years after graduation.

- Courses and workshops – specially tailored to the needs of occupational groups in the arts – new: eligible to be credited as electives
- Free of charge for students and young graduates
- Toolbox containing information and skills helpful in successfully launching one's career
- Personal advising (by appointment)
- Performance opportunities for advanced students and young graduates beyond those that usually arise of part of university studies
- Online platform "mdw Artists"

Athletics

University Sports Institute (USI) Vienna usi-wien.at/anmeldung

Members of the mdw community can choose from a wide range of course offerings.

Individuals under 25 years of age become eligible for discounts from the USI when they enrol at the university.

hmdw



HochschülerInnenschaft a. d. Universität
für Musik und darstellende Kunst Wien

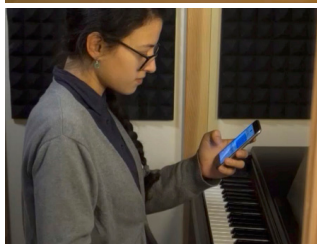
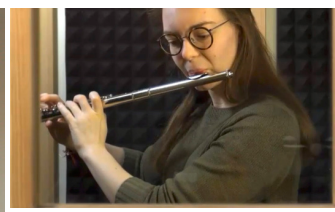
MEHR RAUM ZUM ÜBEN!

Das hmdw-Übezimmerlokal (ÜZL)

Nähe mdw-Campus: Ungargasse 53, 1030 Wien

11 Übeboxen
inkl. einer großen Ensemble-Übebox

Registrierung im Büro der hmdw



hmdw – Hochschüler*innenschaft an der mdw – Universität für Musik und darstellende Kunst Wien
Anton-von-Webern-Platz 1, 1030 Wien, +43 1 711 55-8901

Psychosoziale Beratung

Für Studierende der mdw:
Vertrauliche Einzelgespräche zur
gemeinsamen Lösungssuche –
anonym & kostenfrei



Beratung und Unterstützung bei:

- studienbedingten und persönlichen Problemen, Konflikten und Krisen
- Unsicherheiten und Ängsten (auch im Hinblick auf die Gestaltung der Zukunft)
- belastenden seelischen Zuständen und Suchtproblemen

hmdw

Terminvereinbarung & Beratung:
mdw.ac.at/psychosozialeberatung

Raum U0129, Ungargasse 14, 1030 Wien

mdw
universität
für musik und
darstellende
kunst wien



Kunst und Gesundheit an der mdw



Lehrveranstaltungen
Gesunde Kunstausbübung
für Studierende



Forschung
Musikwirkungsforschung,
Musizierwissenschaft,
Prävention



**Allgemeine
Gesundheitsförderung**
Maßnahmen für alle
mdw-Angehörigen

Gesundheitserhaltung, Gesundheitsförderung
und Vorbeugung berufsbedingter Beschwerden
**Gesamtangebot: mdw.ac.at/kunstundgesundheit
& [musikundgesundheit.at](https://mdw.ac.at/musikundgesundheit)**



Kompetenzzentrum für

Akademische Integrität

Tipps, Infos, Leitfäden, Richtlinien u.v.m.

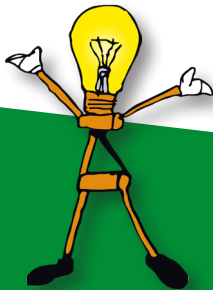
www.mdw.ac.at/aki

Workshop und
Einzelcoaching

**EinStein für meine
Abschlussarbeit**

18.11.2019
und 24.4.2020

Akadem / sche
ntegrität
write [•] right



AKI-Trailer
„Die Abschlussarbeit“

